

**PROJECTS**  
230°

**SCREEN SIZE**  
40" - 130"

**MIRROR YOUR SCREEN**

**HIGH DEFINITION**

**USE WITH MANY TECH DEVICES**

**CONNECT VIA HDMI USB**

# ROCK DRIVE-IN

PORTABLE PROJECTOR

**THE SMART WAY TO WATCH + GAME**  
GREAT FOR MOVIE NIGHTS  
GAMING | CAMPING & HOLIDAYS



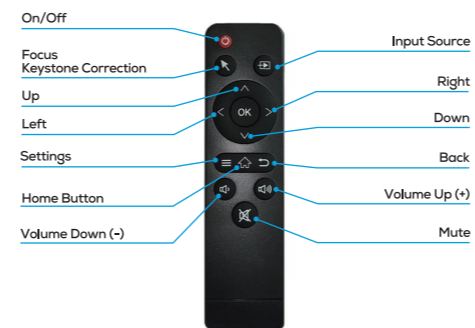
Please read this instruction manual before first use and keep for it for future reference.

PRODUCT SPECIFICATIONS	
Screen Size	40" to 130" (101.5cm x 330cm)
Projecting Angle	230° (forwards, backwards, upwards)
Projector Distance	0.9m - 4.2m
Compatible with	Smartphones, tablets, laptops, game consoles, streaming services & apps
High Definition	600p, decodes 1080p
Image Ratio	Default 16:9 (4.3/19:9 aspect ratio optional)
Power	AC 100-240V
Keystone Correction	Manually correct skewed images
Speaker	3 Watt
Inputs	HDMI, USB A, 3.5mm Aux
Chip	High performance Hi 3101 (Dual-Core - 32 bit)
Lumens	110 ANSI
Product Size	193 x 101
Weight	60g approx
Remote	Requires 2 x AAA batteries
HDCP Compatible	Version 1.4

### CONTENTS

- Rock Drive-In Projector
- Remote Control
- Power Adaptor
- HDMI Cable
- Manual

### REMOTE CONTROL



### COMPATIBILITY

- Suitable for Mobiles, Tablets, Laptops, Game Consoles
- Most devices when connected via a HDMI or USB A charge and sync cable.

### SET UP

The placement of your Drive-In projector is crucial for an optimal viewing experience. Follow these tips to find the perfect spot.

#### Area for Projection

Ensure you choose a flat wall, ceiling or backdrop to project your image onto. For best results the backdrop should be white.

#### Minimise Ambient Light

Choose a room or area with minimal light or windows, or use blackout curtains when indoors to reduce glare and improve image contrast.

#### Screen Size and Distance

For best results a screen size of between 40" to 130" is recommended. The best viewing distance is between 0.9m to 4.2m.

#### Seating Arrangement

Ensure the center of the screen is at eye level and that your seating provides a comfortable viewing angle.

#### Ventilation

Allow adequate space around the projector for ventilation to prevent overheating. Ensure the vents are dust free and are never covered up.

### POWER ON/OFF

Ensure the power cable is connected to the Rock Drive-In. Press and hold the power button on the rear of the Rock Drive-In for 3 seconds to turn on. To turn off double press the button, or turn off via the remote control.

### ADJUSTING THE IMAGE AND SCREEN SIZE

Once you've positioned your Drive-In projector, you can now fine-tune the image and screen size.

#### Keystone Correction

If the Rock Drive-In isn't perfectly perpendicular to the screen, you'll likely notice that the image maybe skewed, you can change the proportions in the settings section on the user interface screen under 'Keystone' to correct the image's angles so it becomes squared.

#### Zoom and Focus

Adjust the focus with the wheel on top of the Drive-In until you achieve sharp, clear text and images.

#### Aspect Ratio

Ensure the projector's aspect ratio matches your content to prevent stretching or compressing the image. Common aspect ratios include 4:3 for standard definition and 16:9 for high definition.

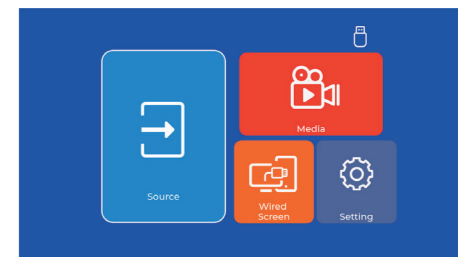
### CONNECTING YOUR DEVICE

You can connect your device via HDMI or USB A for video and use the Aux port for an external speaker. HDMI connection is the most common for high-definition video and audio. (N.B- Not all HDMI cables are compatible, only 576i/ 480i/ 576p/ 480p/ 720p/ 1080i (/1080P\_60, MAX 1920 X 1080P 60).

### HOW TO USE

Connect the power cable, press and hold the ON/OFF button and the projector will turn on. Position the Rock Drive-in so it projects onto the area where you want to watch your media. Connect your device via a HDMI cable or a USB cable. When connecting a new device always remove all cables and turn the Drive-In 'Off' and 'On' again to reset.

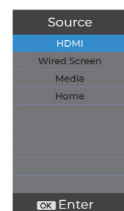
### ROCK DRIVE-IN USER INTERFACE



Once connected you can now use the Drive-In User Interface, adjust the focus wheel on the top of the projector so the on screen text is clear. Using the remote you can now fine tune the settings, everything you need to control or reset the Rock Drive-In is here.

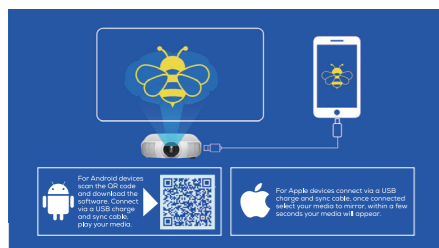
### HDMI Connection

Connect your device by the HDMI port, choose 'Source' on screen or press on your remote, choose 'HDMI' on the User Interface menu and press 'OK', you are now connected.



### iOS/ Apple Devices

For Apple devices select 'Wired Screen', the below screen will pop up. Connect your Apple device to the USB port. On your Apple device choose the media you want to mirror, within a few seconds it will mirror and the below screen will disappear.



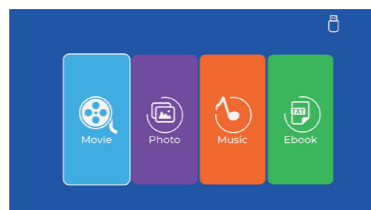
(IMPORTANT for all Apple & Android Devices: Your USB cable must be a charge and sync cable with data transmission function, a charge only cable will not work).

### Android Devices

Connect your device to the USB port. Either scan the QR code or download the software when prompted and install - see image bottom left.

### Media Player/ USB Card Readers

Connect your media player/card reader (with the card inserted) into the USB port. Go to Media, choose the type of media and play/view.



### Playable Formats

**Video:** MP4/MOV/3GP/MPEG1/MPEG2/H.264  
**Audio:** MP3/MMA/AAC/AC3/CAT/WAV  
**Photo:** JPG/JPEG/PNG/BMP

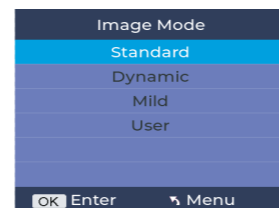
### TROUBLESHOOTING

In the need to reset the Drive-In, turn it Off, unplug all the cables and leave it turned off for around 10 seconds. The Drive-In is now reset and you can reconnect your device following the instructions.

### SETTINGS

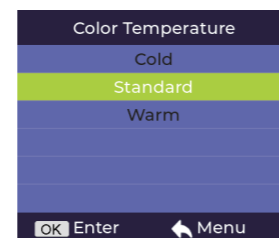
#### Image

Adjust the image: Go to Settings > Image Mode, choose your preferred setting and click 'OK'.



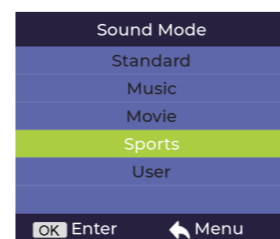
#### Colour

Adjust the colour: Go to Settings > Color Temperature, choose your preferred setting and click 'OK'.



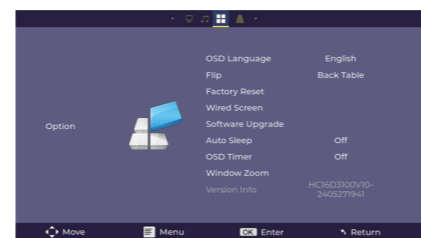
### Sound

Adjust the sound: Go to Settings > , choose your preferred setting and click 'OK'.



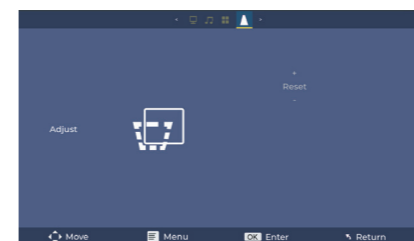
### Flip/Rotate Screen

Flip or rotate your projected image: Go to Settings > Flip, choose your preferred setting.



### Skewed Image/ Keystone Correction

If your image is skewed: Go to Settings > adjust with the '-', '+' or 'Reset' option on screen and click 'OK'.



### Auto Sleep

The Drive-In projector can be set to Auto Sleep after a set number of hours of use (this setting only works in standby mode & not when videos are playing) : Go to Settings > Auto Sleep > On, choose your preferred time and click 'OK'.

### HDCP Content Protection Standards

The Rock Drive-In projector supports HDCP version 1.4. While this ensures secure content delivery, some apps or cables may not meet the required standards, potentially not displaying your content. HDCP is key in protecting against unauthorised distribution and piracy.

### SAFETY

**IMPORTANT:** Read all information and warnings before using the Rock Drive-In Projector. Improper use of this product may lead to the product being damaged. Do not attempt to power the projector with any other cables other than the one provided. Ensure that cables are inserted correctly and in the correct direction, do not force cables into the ports as this may cause damage to the cables and projector. Do not dismantle or modify the projector in any way. Do not use this projector in bathrooms or in wet areas. Do not expose the projector to moisture or immerse it in liquid. Keep this product dry at all times. Do not keep the projector in an environment that has excessively high temperatures, including intense sunshine. Do not throw this product into a fire or leave in a hot environment. Do not place this product in or near microwaves or cooking devices. Avoid dropping and avoid any other impact or friction to this product. Do not place the projector on flammable materials such as bedding or carpets as the projector can get warm. Ensure that the vents on the projector are not covered to allow dispersion of heat, clean with a dry cloth to remove dust to avoid overheating. Do not touch the projector with wet hands. Disconnect the power cable from the projector when not in use. If any issue arises when using the projector, disconnect the cables and contact your dealer. All Rock's products have been tested comprehensively to ensure quality. If you encounter any unusual heat, discolouration or product distortion during use or storage, please

stop using it immediately and contact the dealer. This product is not intended for use by persons (including children) with reduced physical, sensory or mental capabilities (or lack of experience and knowledge) unless they have been given supervision or instructions concerning the use of the projector by a person responsible for their safety. Children should be supervised to ensure that they do not play with the projector, this is not a toy. This product is not intended for commercial use. Please recycle or dispose of this product at its end of life, dispose of responsibly based on your local authorities rules. Contact your local recycling center of how to dispose of safely. **WARNING:** Do not look directly into the lens of the projector when turned on as the strong light may damage your eyes or eyesight.

**ROCK**

Brandquest UK Ltd  
Middlewich, Cheshire, CW10 0GF.  
Designed in the UK.  
Product made in China.  
Design & specification may be subject to change without prior notice.

[www.ROCKAUDIO.co.uk](http://www.ROCKAUDIO.co.uk)

**One year warranty:** This covers the original purchaser and is not transferable. This warranty covers NORMAL USE, due to defects in materials or workmanship, your product will be repaired or replaced within one year from purchase. Damages or malfunctions resulting from misuse, tampering, modification and accidents are not covered.

